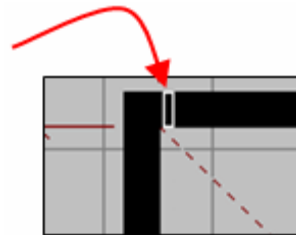
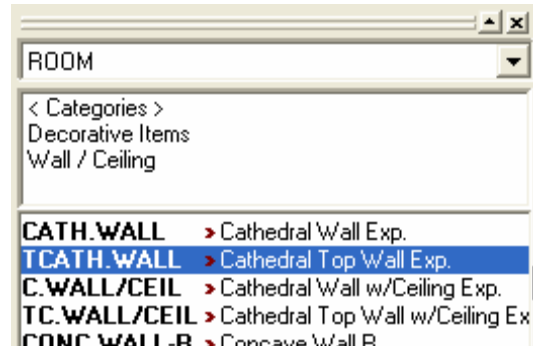


Vaulted Ceilings

In this section you will learn how to work with vaulted ceilings.

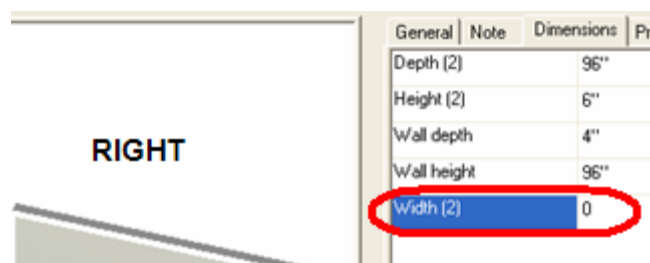
Place a plain Vaulted Ceiling

1. Choose the **ROOM** catalog in the **Drag & Drop** list.
2. Double-click on **Decorative Items**, then **Wall/Ceiling**.
3. Drag and drop a ceiling type on the placement zone of the wall where you want to add a vaulted ceiling.
4. Move the outline of the ceiling type to the beginning of the wall.
5. Click to place the beginning point.
6. Drag the outline to the other end of the wall and click to set.

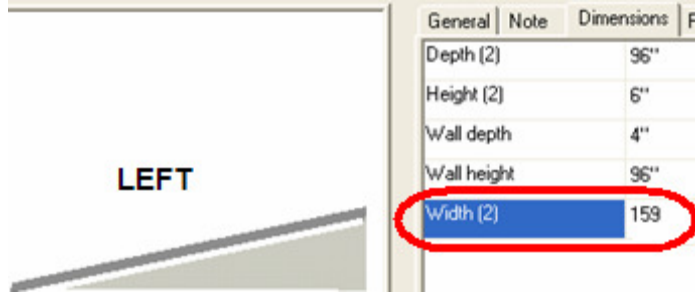


Change the Slope of a Vaulted Ceiling

1. Right-click on the wall type then select **Attributes**.
2. Click the **Dimensions** tab.
3. When looking at the wall, if the low end of the wall is to the:
 - a) right, type **0** in the **Width(2)** field

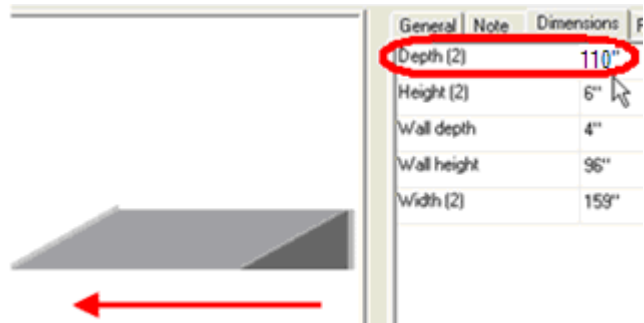


b) left, type the same dimension as the wall type (ex: 159")



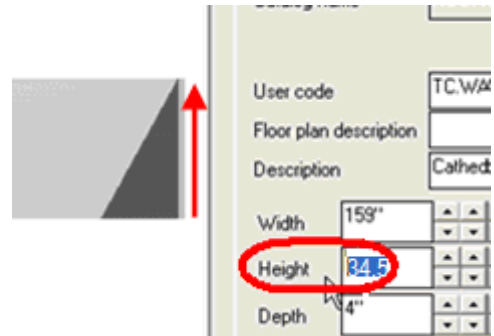
Extend the Ceiling over Walls

Add up the width of the wall and the thickness of the walls, then type this sum in the **Depth(2)** field.



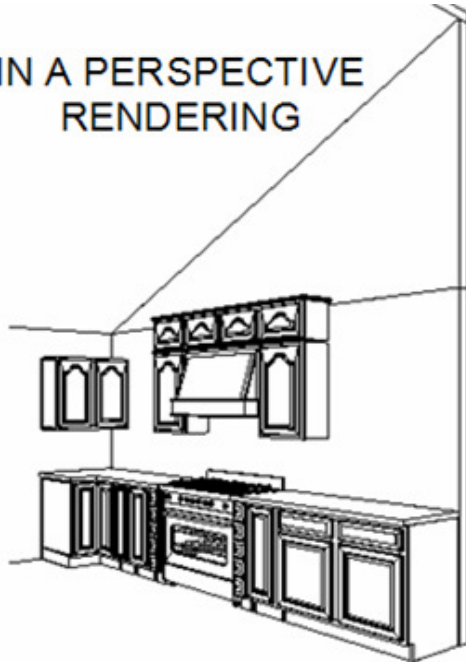
Change the Height of the Vaulted Ceiling

To set the height of the vault, click the **General** tab of the **Attributes** dialog and type the dimension in the **Height** field.

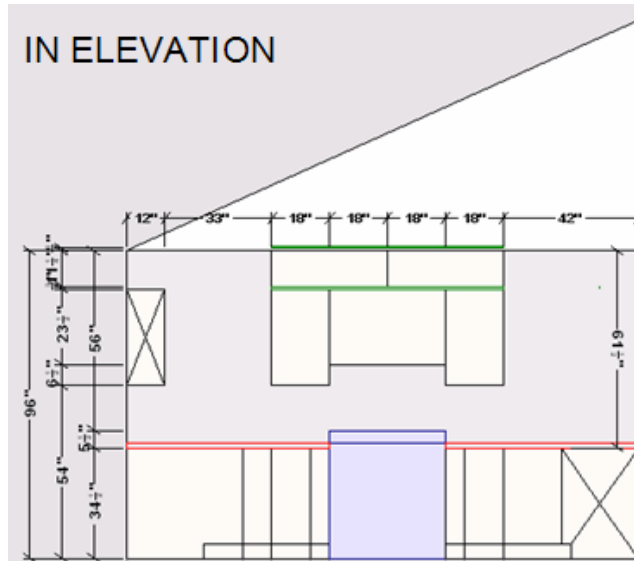


Below is what a vaulted ceiling looks like in a perspective rendering and in an elevation:

IN A PERSPECTIVE RENDERING



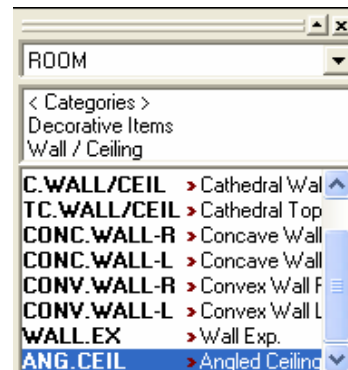
IN ELEVATION



Place a Vaulted Ceiling with a Skylight

To place a vaulted ceiling with a skylight, you will need to place a shape from the **ROOM** catalog.

1. Choose the **ROOM** catalog in the **Drag & Drop** list.
2. Double click on Decorative Items then Wall/Ceiling.
3. Select **ANG.CEIL**.
4. Place it in the area where you want to add your ceiling.



Edit the Vaulted Skylight Ceiling

The following tables list variable names that are relevant to vaulted ceilings.

Variables found in the **General** tab:

Name	Function	Image
Width	Controls the width of the complete ceiling shape	
Height	Controls the height of the ceiling from the lowest part to the peak of the slope	
Depth	Controls the depth of the slope	
Up-Down	Controls the height position of the sloped ceiling (in reference to the wall)	

Variables found in the **Variable** tab - **Quantity** section:

Name	Function	Image
Sky Light Quantity	Changes the number of skylights in the ceiling	
Spot Quantity	Changes the number of spot lights placed in the ceiling	

Variables found in the **Variable** tab - **Dimensions** section:

Name	Function	Image
Spot Distance	<p>Controls the location of the spot on the ceiling (left to right movement)</p> <p>Note: The more spots you put, the more spot distances you will find in the Dimensions section</p>	
Skylight Height	Controls the height of the window	