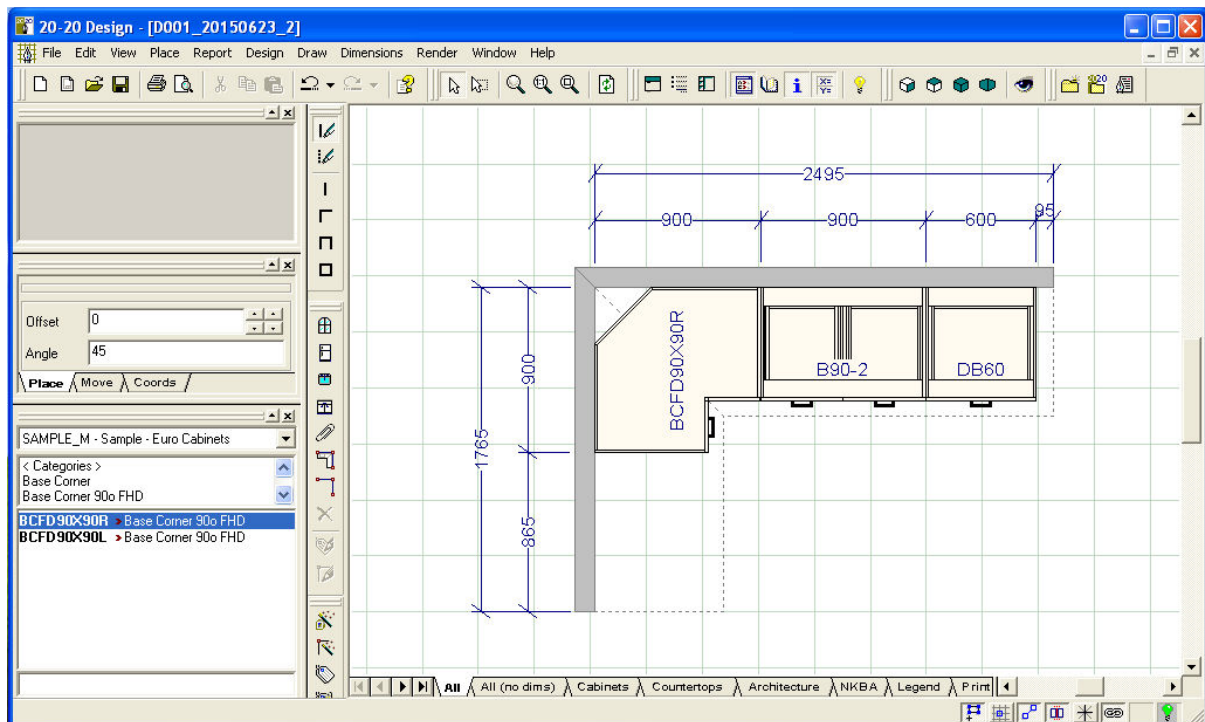


Example export – 2020 Design V8.1

Sample design as shown:

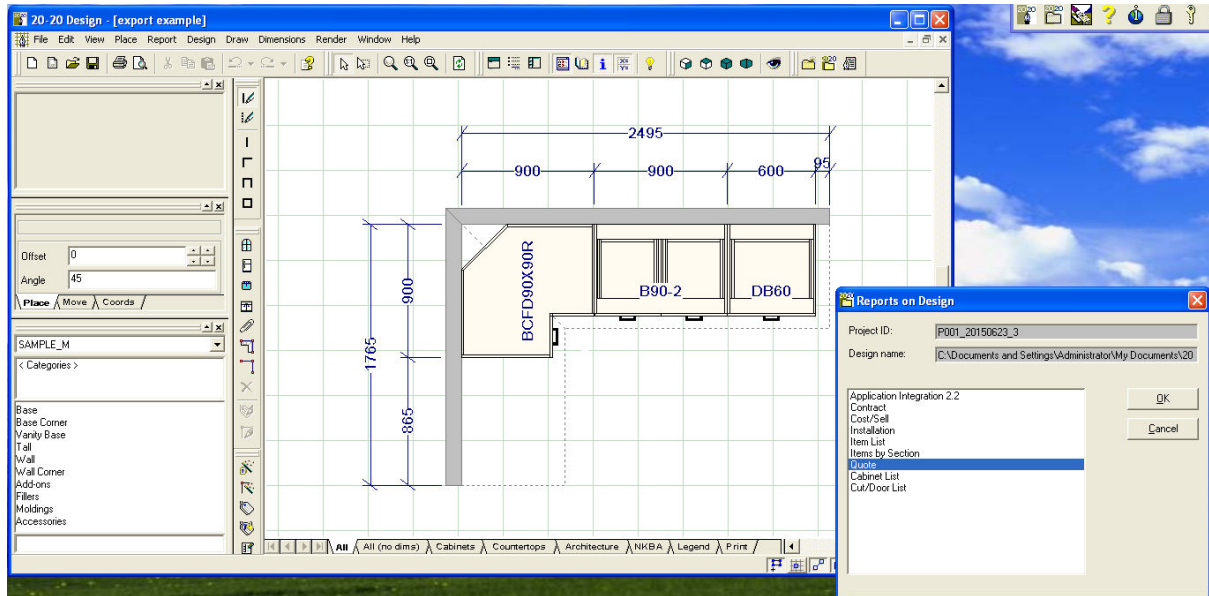


There are only 3 items in this design – codes and pricing below.

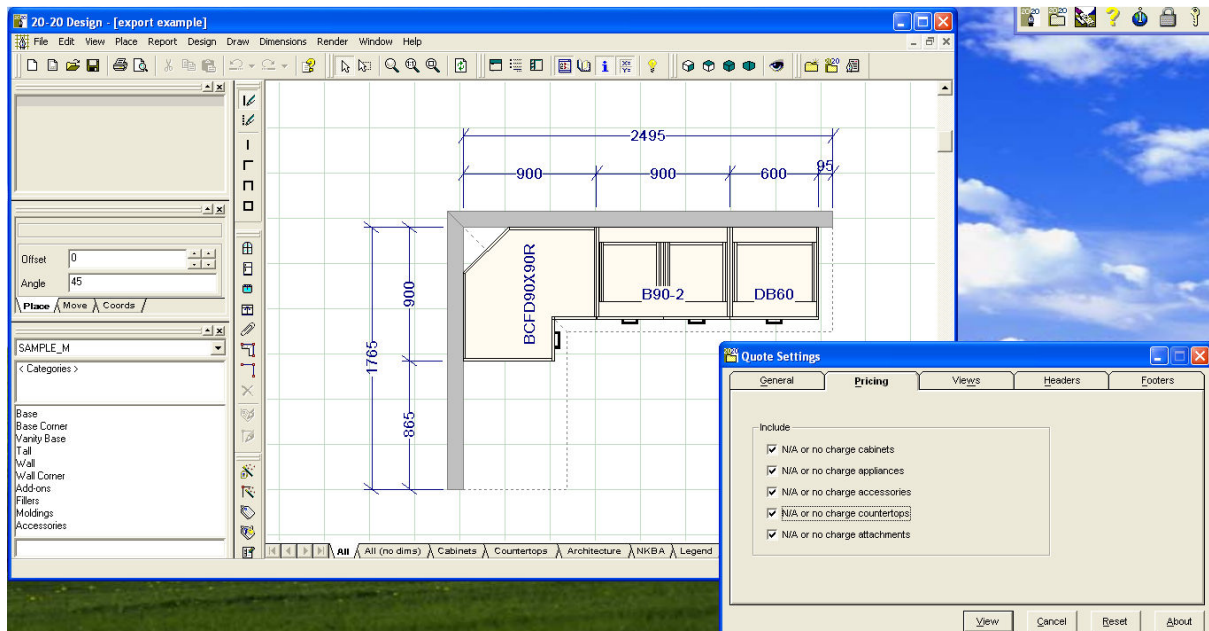
ITEMS							
#	Qty	Usercode	Manuf Code	Type	Catalog	Price	Finished Side
1	1	BCFD90X90R	BCFD90X90R	🔥	SAMPLE_M	\$433.00	Left
2	1	B90-2	B90-2	🔥	SAMPLE_M	\$407.00	None
3	1	DB60	DB60	🔥	SAMPLE_M	\$430.00	Right

Export Process

Go to Reports, reports on Design, Quick Sale, Quote and change the 'Show:' field to show All.

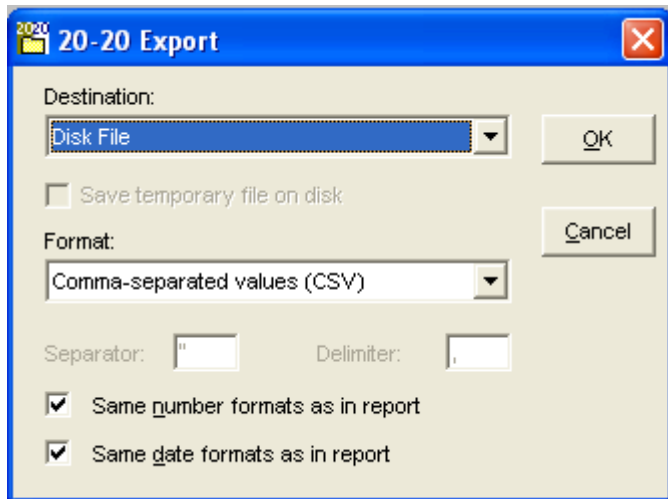


Go to the 'Pricing' tab and tick the boxes shown below:



Now run the report and choose the Export options you find work best:

- 1) Disk File and CSV. This produces a file where each item is on a separate line. This is the easiest version to import into a spreadsheet or database.

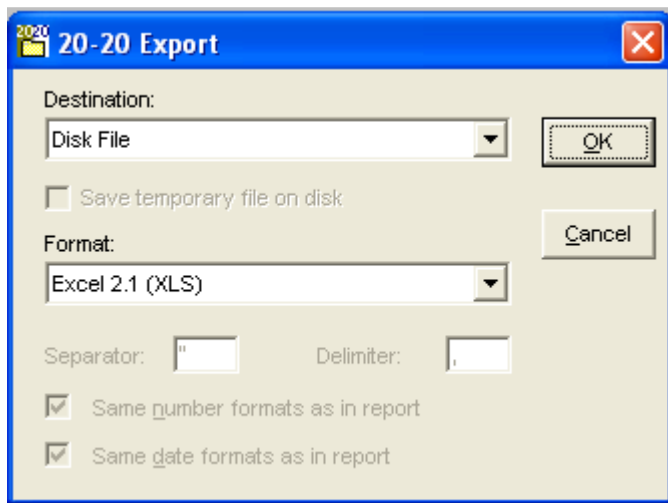


This produces the attached file 'Comma.csv'

The fields you want are DB (UserCode), DD (Description) and DE (Price)

For some reason (at least in the catalogue and report I tried), field DC (ManufactureCode) is coming out blank despite having contents.

- 2) Disk File and Excel 2.1. You have to discard a number of lines from this version but it's easier to read visually.



This produces the attached file 'Excel21.xls'